



WORLD
RESOURCES
INSTITUTE

ENERGY ACCESS EXPLORER

Energy Access Explorer uses mapping to address the state of energy access in unserved and underserved areas.



WHAT IT DOES

An online, open-source, interactive platform that:

- Brings together and visualizes public data sets on both energy supply and demand.
- Creates custom analyses to identify and prioritize areas where energy access markets can be expanded.

WAYS TO USE THE PLATFORM

- **Off-grid developers** can use the platform to access demographic and socio-economic data to help identify gaps in market opportunities.
- **Electrification planning agencies** can use the platform to explore the potential of grid extensions, off-grid systems, and renewables for energy access.
- **Impact investors and donors** can use the platform to identify areas which need more funding to meet development goals on energy access.

CONTACT

Dimitrios Mentis, Energy Access Mapping Manager, World Resources Institute

dimitrios.mentis@wri.org

energyaccessexplorer.org | [@WRIEnergy](https://twitter.com/WRIEnergy)

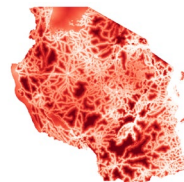


IKEA Foundation



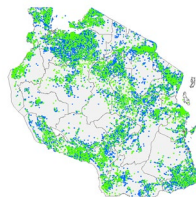
SAMPLE DATASETS FOR ANALYSIS USING ENERGY ACCESS EXPLORER

Users will be able to select, weigh the importance, and analyze more than 20 data sets from each of the four categories in order to identify and prioritize focus areas:



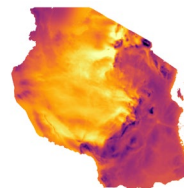
Demographics

Prevalence of Poverty



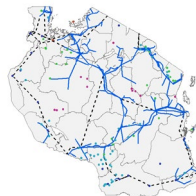
Social & Productive Uses

Schools & Hospitals



Energy Resources

Solar Potential (GHI)



Infrastructure

*Transmission Lines
& Mini Grids*